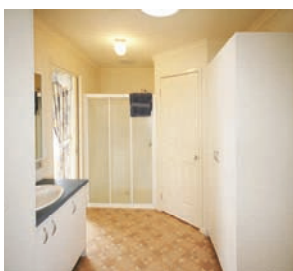
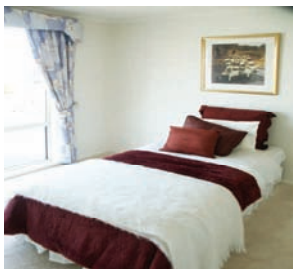


Woodgrove

P
PREMIER
Homes



“Keeping families together”

The two bedroom Woodgrove with built in verandah and deck affords ten and a half squares of luxury living.

The bathroom incorporates a huge 1200mm shower, lots of storage and also a separate toilet.

The family-sized kitchen features a hot plate, a separate wall oven with pot draw below, microwave space and good work areas .

Features

- Spacious Living & Dining Areas
- Bay Window
- Separate Large Kitchen
- Verandah & Deck area off Lounge
- Panoramic Sliding Glass Door unit
- Large Master Bedroom

Dimensions

- | | | |
|--------------|---------------------|---------|
| • Length | 12.44m | 40' 8" |
| • Width | 7.8m | 25' 7" |
| • Area | 91.18m ² | 9.82sq |
| • Deck | 5.85m | 19' 19" |
| • Bay Window | 1.05m | 3' 31" |
| • Total Area | 98.08m ² | 10.55q |
- (Total Area = Area + Deck + Bay Window)

Premier Homes (Vic) Pty. Ltd. - ACN 076 828 825

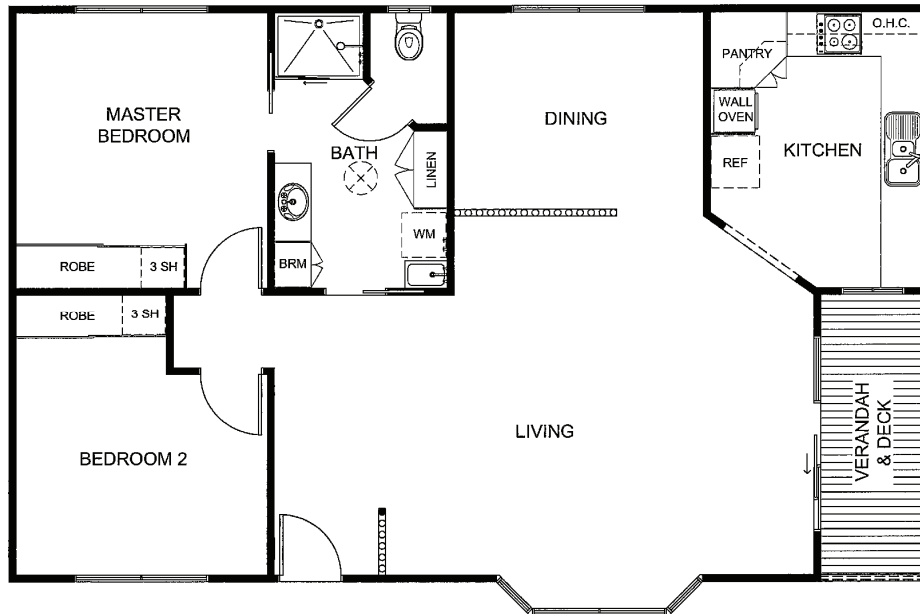
Premier Display Centre located at 110 Canterbury Road, Bayswater Vic 3153

Telephone: (03) 9761 6699 Fax: (03) 9761 6833

Website: www.grannyflats.com.au

Monday - Saturday 9.00am - 5.00pm Sunday 11.00am - 5.00pm

Woodgrove



SPECIFICATIONS

Standard Inclusions

| | |
|-------------------|------------------------------------|
| External Cladding | Hardiplank Woodgrain Weatherboards |
| Roof & Gutters | Colorbond |
| Flooring | 19mm. Sheet Flooring |
| Windows | Sliding or Awning Powder Coated* |
| Bay Window | To Lounge |
| Flyscreens | To all opening windows |
| Steps | 2 Steps |
| Insulation | To 5-star Energy rating* |
| Sub Floor | Fully enclosed* |
| Internal Doors | Smooth or 4-Panel |
| Cabinetry | Quality Cabinetry Throughout |
| Cupboards | Pantry, Linen & Broom |
| Robes | Built-in Robes to Bedrooms |
| Wall Tiling | Kitchen, Bathroom & Laundry |
| Hot Water Service | 160 Litre Electric |
| Stove | Hot Plate and Wall Oven |
| Rangehood | Retractable - Recirculating |
| Sink | Stainless Steel Bowl with Drainer |
| Vanity Unit | Post-formed top with Acrylic Basin |
| Kitchen Tap | Flickmixer |
| Other Taps | Easy-Grip |
| Shower | 1200mm x 900mm Fully Moulded |
| Shower Screen | Clear Laminated |
| Toilet | Dual Flush |
| Fan/Light/Heater | To Bathroom |
| Light Points | Internal & External |
| Power Points | To all rooms |
| Miscellaneous | Mirror above Vanity |
| | Safety Switches & Smoke Detector |

Move in Options

| | |
|-----------------------------------|---------------------|
| Painting Inside | From Builders Range |
| Painting Outside | From Builders Range |
| Floor Coverings | From Builders Range |
| Connection To Services Allowance* | |

Featured Display Choices

Recessed Ceiling & Feature Cornice
Ceiling Rose
Corbels to Kitchen Archway
Window Seat in Bay window
Cushions for Window Seat
Feature front door & Sidelight
Heritage Trim to Front Windows
Turned Posts to Built-in Verandah
Heart Shape Balusters
Chamfer Hardiplank Cladding
Porch to Front Entrance

More Options

Verandah
Deck and/or Ramp
Handrails
Heating and Cooling
Light Fittings
Curtains
Grab Rails

* Conditions Apply